

DESCRIZIONE / DESCRIPTION

Raccoglitore di impurità a "Y"

Brass "Y" strainer

FOTO / PICTURE



4500

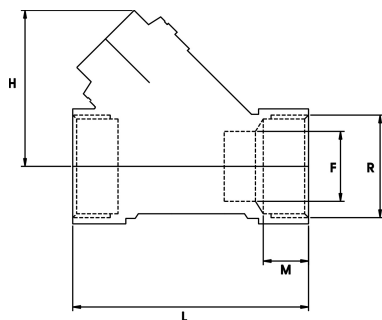
4510

CARATTERISTICHE / FEATURES

- 4500: corpo in ottone CW617N
- 4510: corpo in bronzo (85/5/5/5)
- filtro in acciaio inox
- finitura sabbiata
- filettature ISO 228/1

- 4500: brass "CW617N" body
- 4510: bronze body (85/5/5/5)
- stainless steel basket strainer
- sand-blasted finishing
- threading to ISO 228/1

DIMENSIONI PRINCIPALI / LEADING DIMENSIONS



R"	1/2	3/4	1	1 1/4	1 1/2	2	2 1/2	3	4
F	15	20	22.5	32	40	50	60	70	90
L	54	66	75	95	105	125	146	170	210
M	11	12.5	15	16	18	20	18	21	24
H	37	48	50	66	73	90	110	127	155
mesh	1x0.5	1x0.5	1x0.5	1x0.5	1x0.5	1x0.5	1x1.8	1x1.8	1x1.8
Filtro µm	400	400	400	400	400	400	800	800	800

4500

R"	1/2	3/4	1	1 1/4	1 1/2	2	2 1/2	3	4
F	15	20	22.5	32	40	50	60	70	90
L	56	70	75	94	106	125	145	165	210
M	11	12.5	15	16	18	20	18	21	24
H	38	48	50	68	75	90	110	125	165
mesh	1x0.5	1x0.5	1x0.5	1x0.5	1x0.5	1x0.5	1x1.8	1x1.8	1x1.8
Filtro µm	400	400	400	400	400	400	800	800	800

4510

PRESSIONI DI ESERCIZIO A MAX 80°C / WORKING PREASSURES AT 80°C

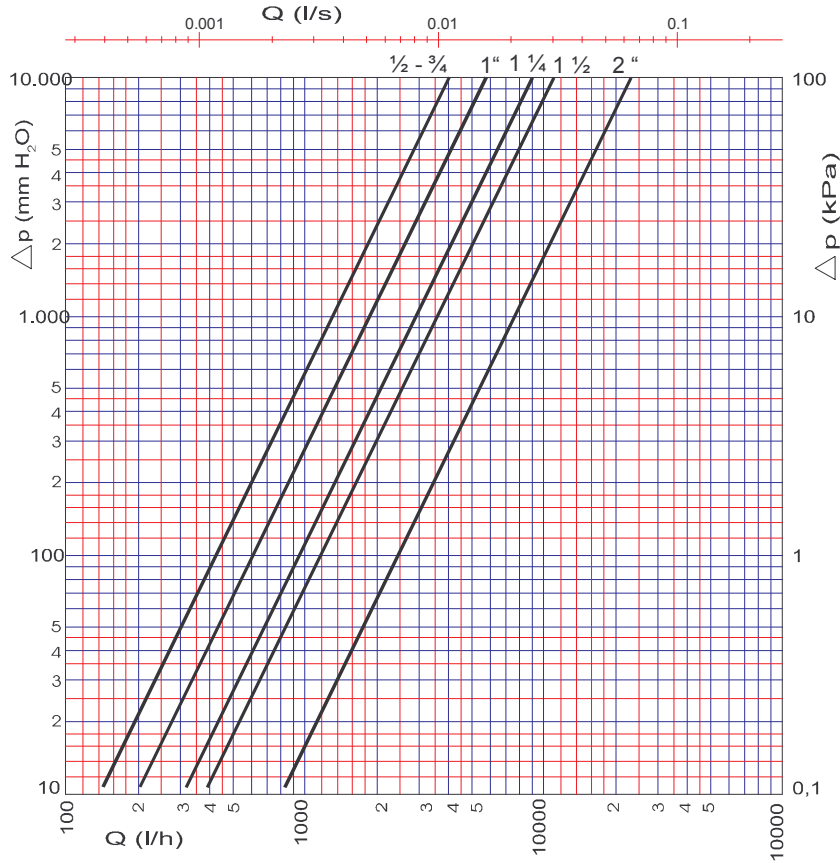
PN 40												p.s.i. 600
PN 30												p.s.i. 435
PN 25												p.s.i. 350
PN 20												p.s.i. 300
PN 16			*	*	*	*	*	*	*	*	*	p.s.i. 250
PN 10												p.s.i. 150
	1/4"	3/8"	1/2"	3/4"	1"	1 1/4"	1 1/2"	2"	2 1/2"	3"	4"	

PERDITE DI CARICO / PRESSURE DROPS

R"	1/4	3/8	1/2	3/4	1	1 1/4	1 1/2	2	2 1/2	3	4
Kv	-	-	4,1	5,5	6,8	9	10,6	24,8	-	-	-

$$\Delta P [\text{mm H}_2\text{O}] = 10.000 \times \left[\frac{G [\text{mc/h}]}{Kv} \right]^2$$

DIAGRAMMA PERDITA DI CARICO FILTRI A "Y"
PRESSURE DROP DIAGRAM: "Y" PATTERN FILTER



ART 4500

KV	
1/2 - 3/4	4.1
1	6.8
1 1/4	9
1 1/2	10.6
2	23.8