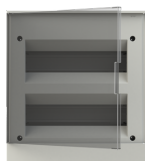


PRODUCT-DETAILS

BEF402224

BEF402224 Consumer Unit (with terminal bars)



General Information

Extended Product Type	BEF402224
Product ID	1SZR004002A1207
EAN	3800500733272
Catalog Description	BEF402224 Consumer Unit (with terminal bars)
Long Description	basic E Flush Mounted Transparent Grey Door 24 Module

Environmental

RoHS Status	Following EU Directive 2011/65/EU and Amendment 2015/863 July 22, 2019
RoHS Information	9AKK107680A1217
Conflict Minerals Reporting Template (CMRT)	9AKK108468A3363

Dimensions

Product Net Width	300 mm
Product Net Height	335 mm
Product Net Depth / Length	105 mm
Product Net Weight	1.15 kg

Ordering

Minimum Order Quantity	1 piece
Package Level 1 Units	box 1 piece
Package Level 1 Gross Weight	1.147 kg

Certificates and Declarations

Declaration of Conformity - CE	9AKK107680A1217
--------------------------------	-----------------

Installation

Instructions and Manuals	No document needed
--------------------------	--------------------

Popular Downloads

Data Sheet, Technical Information	No document needed
-----------------------------------	--------------------

Classifications

ETIM 8	EC000214 - Small distribution board
ETIM 9	EC000214 - Small distribution board
WEEE Category	Product Not in WEEE Scope
eClass	V11.0 : 27142409

Categories

Low Voltage Products and Systems → Enclosures → Consumer Units → Consumer Units → basic E Flush Mounted

