



AVK SUPPORT TILE

80/46-001

Type 1 FSL

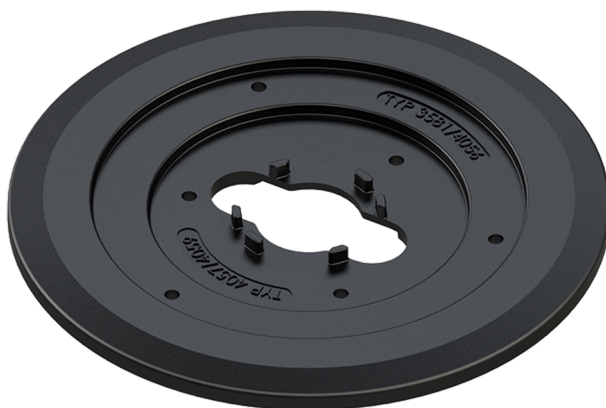
AVK offers a wide range of fixed and height adjustable surface boxes in various dimensions, which can be used in many fields of application. Support tiles are often used to increase support in weak soils. AVK support tiles are made of high grade polyethylene mix making them lightweight, easy to handle and recyclable.

Product description:

Synthetic support tile with large spindle fixation, for surface boxes 80/31, 80/32, 80/33, 80/34, 80/40 and 80/42

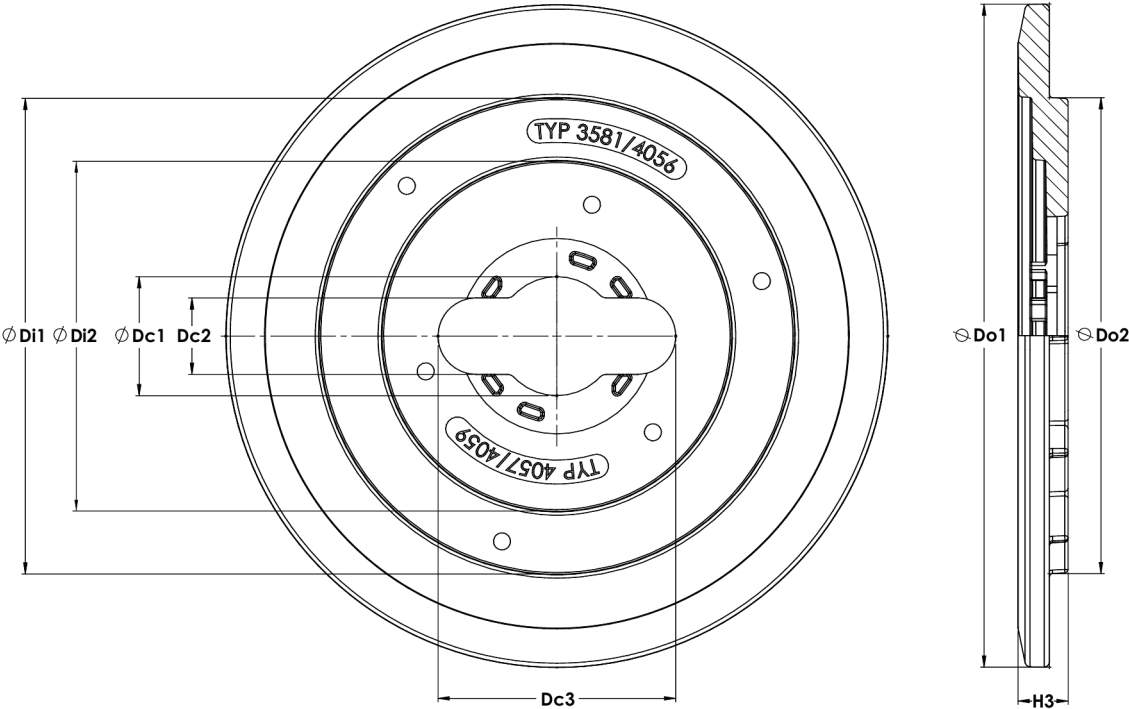
Features:

- Support tiles increase support required by surface boxes in weak soils
- 100% recyclable
- With small rims for fixation of surface boxes
- Centralises surface box above spindle
- Always able to operate spindle
- Special design for fixation of large spindles



Expect... **AVK**

The designs, materials and specifications shown are subject to change without notice due to the continuous development of our product range.



Component list:

1.	Support tile	HDPE
----	--------------	------

Components may be substituted with equivalent or higher class materials without prior notification.

Reference nos. and dimensions:

AVK ref. no.	Do1	Do2	Dc1	Dc2	Dc3	Di1	Di2	H3	Theoretical weight / kg
	mm	mm	mm	mm	mm	mm	mm	mm	
80-46-00001	390	280	70	45	140	280	205	30	0.9