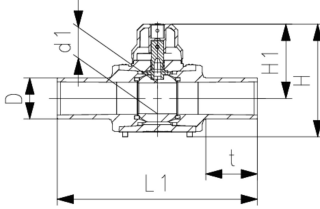


## ELGEF Plus Ball valve PE100 d20-225mm / SDR 11



- 10 bar Gas / 16 bar Water
- d160 up to d225 are supplied with base plate and straps
- d1 = diameter of bore
- Regarding pressure rate and application local standards and regulations have to be considered
- \* In accordance with ANSI B16.40



d (mm)	DN (mm)	Code	Weight (kg)	d1 (mm)	L1 (mm)	H (mm)	H1 (mm)	t (mm)
20	15	<b>193 103 206</b>	0.487	23	264	144	106	72
25	20	<b>193 103 207</b>	0.490	23	264	144	106	72
32	25	<b>193 103 208</b>	0.506	23	274	144	106	76
40	32	<b>193 103 209</b>	0.616	30	301	152	110	85
50	40	<b>193 103 210</b>	0.829	38	327	166	117	92
63	50	<b>193 103 211</b>	1.174	48	350	174	115	101
75	65	<b>193 103 212</b>	1.434	48	376	183	124	114
90	80	<b>193 103 213</b>	2.918	68	439	249	167	128
110	100	<b>193 103 214</b>	4.416	83	496	276	180	148
125	100	<b>193 103 040</b>	4.220	62	400	280	195	106
160	150	<b>193 103 042</b>	10.541	88	450	360	235	116
180	150	<b>193 103 043</b>	10.524	88	540	360	235	117
200	200	<b>193 103 044</b>	12.023	88	540	360	235	164
*	225	<b>193 103 045</b>	24.400	120	880	470	322	240

The technical data are not binding. They neither constitute expressly warranted characteristics nor guaranteed properties nor a guaranteed durability. They are subject to modification. Our General Terms of Sale apply.

Georg Fischer Piping Systems Ltd, Postfach, CH-8201 Schaffhausen/Switzerland

Phone +41 -(0)52-631 1111

e-mail: [info.ps@georgfischer.com](mailto:info.ps@georgfischer.com)

Internet: <http://www.gfps.com>