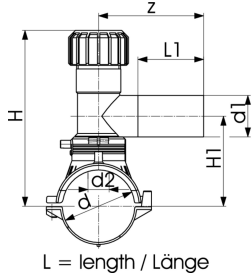




**ELGEF Plus Tapping saddle PE100**  
**d63-400mm/ SDR11 / With 360° rotatable outlet**

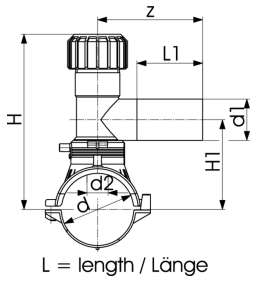
- 10 bar Gas / 16 bar Water
  - With integrated cutter to tap live mains under pressure
  - Complete with lower part
  - 4 mm pin connectors
  - Limited path fusion indicators
  - Long fusion outlet
  - O-ring-sealed screw cap
  - d355-400mm. Not suitable for pipes if wall thickness is larger than SDR17 pipes.
- \* Topload: delivery without lower part for assembling as Top Load with tool no. 799.350.477; angle adaptor (799.350.340) for fusion cable required



	d (mm)	d1 (mm)	SDR	PN (bar)	DN (mm)	Code	Weight (kg)
	63	20	11	16	50	193 131 402	0.697
	63	25	11	16	50	193 131 403	0.637
	63	32	11	16	50	193 131 404	0.701
	63	40	11	16	50	193 131 405	0.718
	63	63	11	16	50	193 131 437	1.426
	75	20	11	16	65	193 131 442	0.831
	75	25	11	16	65	193 131 443	0.830
	75	32	11	16	65	193 131 444	0.812
	75	40	11	16	65	193 131 445	0.849
	75	63	11	16	65	193 131 447	1.549
	90	20	11	16	80	193 131 452	0.794
	90	25	11	16	80	193 131 453	0.790
	90	32	11	16	80	193 131 454	0.770
	90	40	11	16	80	193 131 455	0.811
	90	63	11	16	80	193 131 457	1.494
	110	20	11	16	100	193 131 462	0.826
	110	25	11	16	100	193 131 463	0.808
	110	32	11	16	100	193 131 464	0.831
	110	40	11	16	100	193 131 465	0.805
	110	63	11	16	100	193 131 467	1.097
	125	20	11	16	100	193 131 472	0.880
	125	25	11	16	100	193 131 473	0.878
	125	32	11	16	100	193 131 474	0.878
	125	40	11	16	100	193 131 475	0.874
	125	63	11	16	100	193 131 477	1.184
	140	20	11	16	125	193 131 482	0.887
	140	25	11	16	125	193 131 483	0.874
	140	32	11	16	125	193 131 484	0.894
	140	40	11	16	125	193 131 485	0.920
	140	63	11	16	125	193 131 487	1.180
	160	20	11	16	150	193 131 492	0.916
	160	25	11	16	150	193 131 493	0.912
	160	32	11	16	150	193 131 494	0.915
	160	40	11	16	150	193 131 495	0.936
	160	63	11	16	150	193 131 497	1.221
	180	20	11	16	150	193 131 502	0.994
	180	25	11	16	150	193 131 503	1.001
	180	32	11	16	150	193 131 504	0.957
	180	40	11	16	150	193 131 505	1.007
	180	63	11	16	150	193 131 507	1.587
	200	20	11	16	200	193 131 512	1.015
	200	25	11	16	200	193 131 513	1.015
	200	32	11	16	200	193 131 514	0.985
	200	40	11	16	200	193 131 515	1.024
	200	63	11	16	200	193 131 517	1.290
	225	20	11	16	200	193 131 522	1.016

# Data sheet

valid from: 10/26/22

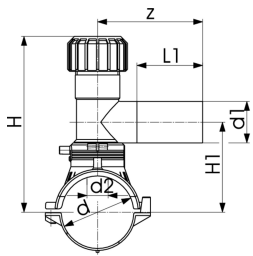


	d (mm)	d1 (mm)	SDR	PN (bar)	DN (mm)	Code	Weight (kg)
	225	25	11	16	200	<b>193 131 523</b>	1.025
	225	32	11	16	200	<b>193 131 524</b>	1.019
	225	40	11	16	200	<b>193 131 525</b>	1.029
	225	63	11	16	200	<b>193 131 527</b>	1.738
	250	20	11	16	250	<b>193 131 532</b>	1.025
	250	25	11	16	250	<b>193 131 533</b>	1.026
	250	32	11	16	250	<b>193 131 534</b>	0.996
	250	63	11	16	250	<b>193 131 537</b>	1.733
	250	40	11	16	250	<b>193 131 535</b>	1.008
Topload	280	63	11	16	250	<b>193 131 547</b>	1.478
Topload	315-355	63	11	16		<b>193 131 557</b>	1.481
Topload	400	63	11	16	400	<b>193 131 577</b>	1.473

	d (mm)	d2 (mm)	H (mm)	H1 (mm)	L (mm)	L1 (mm)	z (mm)	SDR pipe
	63	32	186	108	165	71	130	9 - 11
	63	32	186	108	165	71	130	9 - 11
	63	32	186	108	165	76	130	9 - 11
	63	32	186	108	165	81	137	9 - 11
	63	32	134	112	165	100	160	9 - 11
	75	32	191	113	165	71	130	9 - 11
	75	32	191	113	165	71	130	9 - 11
	75	32	191	113	165	76	130	9 - 11
	75	32	191	113	165	81	137	9 - 11
	75	32	240	118	165	100	160	9 - 11
	90	32	199	121	165	71	130	9 - 11
	90	32	199	121	165	71	130	9 - 11
	90	32	199	121	165	76	130	9 - 11
	90	32	199	121	165	81	137	9 - 11
	90	35	248	126	165	100	160	9 - 11
	110	32	209	131	182	71	130	9 - 17.6
	110	32	209	131	182	71	130	9 - 17.6
	110	32	209	131	182	76	130	9 - 17.6
	110	32	209	131	182	81	137	9 - 17.6
	110	35	258	136	182	100	160	9 - 17.6
	125	32	216	138	165	71	130	9 - 17.6
	125	32	216	138	165	71	130	9 - 17.6
	125	32	216	138	165	76	130	9 - 17.6
	125	32	216	138	165	81	137	9 - 17.6
	125	35	265	143	165	100	160	9 - 17.6
	140	32	233	146	165	71	130	9 - 17.6
	140	32	233	146	165	71	130	9 - 17.6
	140	32	233	146	165	76	130	9 - 17.6
	140	32	233	146	165	81	137	9 - 17.6
	140	35	273	151	165	100	160	9 - 17.6
	160	32	243	156	182	71	130	9 - 17.6
	160	32	243	156	182	71	130	9 - 17.6
	160	32	243	156	182	76	130	9 - 17.6
	160	32	243	156	182	81	137	9 - 17.6
	160	35	283	161	182	100	160	9 - 17.6
	180	32	244	166	165	71	130	9 - 26
	180	32	244	166	165	71	130	9 - 26
	180	32	244	166	165	76	130	9 - 26
	180	32	244	166	165	81	137	9 - 26
	180	35	293	171	165	100	160	9 - 26
	200	32	254	176	165	71	130	9 - 26
	200	32	254	176	165	71	130	9 - 26
	200	32	254	176	165	76	130	9 - 26
	200	32	254	176	165	81	137	9 - 26

# Data sheet

valid from: 10/26/22



L = length / Länge

	d	d2	H	H1	L	L1	z	SDR pipe
	(mm)	(mm)	(mm)	(mm)	(mm)	(mm)	(mm)	
	200	35	303	181	165	100	160	9 - 26
	225	32	266	188	165	71	130	11 - 26
	225	32	266	188	165	71	130	11 - 26
	225	32	266	188	165	76	130	11 - 26
	225	32	266	188	165	81	137	11 - 26
	225	35	315	193	165	100	160	11 - 26
	250	32	279	201	165	76	130	11 - 26
	250	32	279	201	165	76	130	11 - 26
	250	32	279	201	165	76	130	11 - 26
	250	35	328	206	165	100	160	11 - 26
	250	32	279	201	165	81	137	11 - 26
Topload	280	35	343	206	165	100	160	11 - 26
Topload	315-355	35	381	206	165	100	160	17 - 33
Topload	400	35	403	206	165	100	160	17 - 33

The technical data are not binding. They neither constitute expressly warranted characteristics nor guaranteed properties nor a guaranteed durability. They are subject to modification. Our General Terms of Sale apply.

Georg Fischer Piping Systems Ltd, Postfach, CH-8201 Schaffhausen/Switzerland

Phone +41 -(0)52-631 1111

e-mail: [info.ps@georgfischer.com](mailto:info.ps@georgfischer.com)

Internet: <http://www.gfps.com>