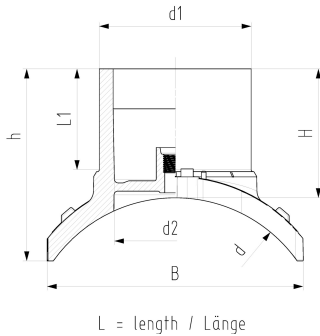




ELGEF Plus Branch saddle topload PE100
d315-1000mm / SDR11 / Outlet 160-225 mm

- 10 bar Gas / 16 bar Water
- Branch Saddle installation only with installation set Topload TL225 (799.300.807)
- Angle adaptors (799.350.340) for fusion cable required
- 4 mm pin connectors
- Limited path fusion indicators
- Spigot outlet for butt- and electrofusion
- Full pressure applicable - no derating factor
- With integrated pressure test port for test cap (799.199.287)



d	d1	DN	PN	SDR	Code	Weight
(mm)	(mm)	(mm)	(bar)			(kg)
315	160	300	16	11	193 135 202	2.548
315	225	300	16	11	193 135 204	4.625
355	160	350	16	11	193 135 212	2.348
355	225	350	16	11	193 135 214	4.594
400	160	400	16	11	193 135 222	2.623
400	225	400	16	11	193 135 224	4.612
450	160	450	16	11	193 135 232	2.429
450	225	450	16	11	193 135 234	4.301
500	160	500	16	11	193 135 242	2.690
500	225	500	16	11	193 135 244	4.569
560	160	600	16	11	193 135 252	2.495
560	225	600	16	11	193 135 254	4.321
630	160	600	16	11	193 135 262	2.616
630	225	600	16	11	193 135 264	4.750
710	160	700	16	11	193 135 272	2.504
710	225	700	16	11	193 135 274	4.360
800	160	800	16	11	193 135 282	2.399
800	225	800	16	11	193 135 284	4.553
900	225	900	16	11	193 135 294	4.390
1000	225	1000	16	11	193 135 304	4.262

d	d1	d2	L	L1	h	H	B	SDR pipe
(mm)	(mm)	(mm)	(mm)	(mm)	(mm)	(mm)	(mm)	
315	160	129	322	106	204	136	273	11-26
315	225	177	360	126	262	165	300	11-26
355	160	129	320	106	200	136	270	11-26
355	225	177	354	126	250	164	312	11-26
400	160	129	320	106	193	133	290	11-26
400	225	177	364	126	241	164	325	11-26
450	160	129	320	106	190	136	270	11-26
450	225	177	364	126	234	164	320	11-26
500	160	129	320	106	182	136	270	11-26
500	225	177	354	126	225	164	312	11-26
560	160	129	320	106	180	180	303	11-26
560	225	177	364	126	222	222	341	11-26
630	160	129	320	106	172	133	304	11-33
630	225	177	364	126	212	164	349	11-33
710	160	129	320	106	169	132	304	11-33
710	225	177	360	126	207	165	348	11-33
800	160	129	320	106	166	132	304	11-33
800	225	177	360	126	200	164	356	11-33
900	225	177	360	126	200	164	356	11-33
1000	225	177	360	126	196	164	356	11-33

Data sheet

valid from: 7/20/22



The technical data are not binding. They neither constitute expressly warranted characteristics nor guaranteed properties nor a guaranteed durability. They are subject to modification. Our General Terms of Sale apply.

Georg Fischer Piping Systems Ltd, Postfach, CH-8201 Schaffhausen/Switzerland

Phone +41 -(0)52-631 1111

e-mail: info.ps@georgfischer.com

Internet: <http://www.gfps.com>