



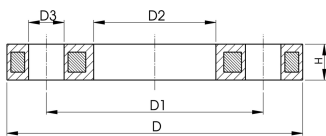
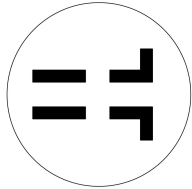
## Flanges PP-Steel

### Model:

- Material: PP (30% glass-fibre reinforced) with steel ring
- Metric: ISO 7005, EN 1092, ISO 9624
- ASME: ANSI/ASME B 16.5 class 150, ASTM D2024, BS 1560, BS EN 1759
- Special flange adapter ANSI for d25 - d50 and d90 required

AL: number of holes

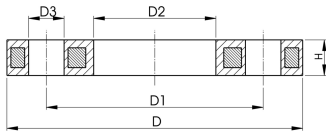
<sup>1)</sup> FM 1613 approved – 15 bar



	d (mm)	DN (mm)	D (mm)	PN (bar)	Standard	Bolt / circle	Design	Code	Weight (kg)
	20	15	95	16	Metric	PN10	Butt/Socket	<b>727 700 206</b>	0.216
	20	15	95	16	ASME	class 150	Butt/Socket	<b>727 701 206</b>	0.213
	25	20	105	16	Metric	PN10	Butt/Socket	<b>727 700 207</b>	0.279
	25	20	105	16	ASME	class 150	Butt/Socket	<b>727 701 207</b>	0.260
	32	25	115	16	Metric	PN10	Butt/Socket	<b>727 700 208</b>	0.429
	32	25	115	16	ASME	class 150	Butt/Socket	<b>727 701 208</b>	0.416
	40	32	140	16	Metric	PN10	Butt/Socket	<b>727 700 209</b>	0.621
	40	32	140	16	ASME	class 150	Butt/Socket	<b>727 701 209</b>	0.730
	50	40	150	16	Metric	PN10	Butt/Socket	<b>727 700 210</b>	0.722
	50	40	150	16	ASME	class 150	Butt/Socket	<b>727 701 210</b>	0.809
	63	50	165	16	Metric	PN10	Butt/Socket	<b>727 700 211</b>	0.900
	63	50	165	16	ASME	class 150	Butt/Socket	<b>727 701 211</b>	0.866
	75	65	185	16	Metric	PN10	Butt/Socket	<b>727 700 212</b>	1.110
	75	65	185	16	ASME	class 150	Butt/Socket	<b>727 701 212</b>	1.117
1	90	80	200	16	Metric	PN10	Butt	<b>724 700 313</b>	1.390
	90	80	200	16	Metric	PN10	Socket	<b>727 700 213</b>	1.369
	90	80	200	16	Metric	PN10	Butt	<b>727 700 313</b>	1.390
	90	80	200	16	ASME	class 150	Socket	<b>727 701 213</b>	1.492
	90	80	200	16	ASME	class 150	Butt	<b>727 701 313</b>	1.499
1	110	100	223	16	Metric	PN10	Butt	<b>724 700 314</b>	1.407
	110	100	220	16	Metric	PN10	Socket	<b>727 700 214</b>	1.522
	110	100	220	16	Metric	PN10	Butt	<b>727 700 314</b>	1.407
	110	100	229	16	ASME	class 150	Socket	<b>727 701 214</b>	1.695
	110	100	229	16	ASME	class 150	Butt	<b>727 701 314</b>	1.739
1	125	125	223	16	Metric	PN10	Butt	<b>724 700 315</b>	1.408
	125	125	220	16	Metric	PN10	Butt	<b>727 700 315</b>	1.408
	125	125	250	16	Metric	PN10	Socket	<b>727 700 815</b>	2.475
1	140	125	250	16	Metric	PN10	Butt	<b>724 700 316</b>	2.300
	140	125	250	16	Metric	PN10	Butt	<b>727 700 716</b>	2.318
	140	125	250	16	Metric	PN10	Socket	<b>727 700 816</b>	2.033
1	160	150	285	16	Metric	PN10	Butt	<b>724 700 317</b>	3.500
	160	150	285	16	Metric/ASME	PN10/ class 150	Butt	<b>727 700 717</b>	3.491
	160	150	285	16	Metric/ASME	PN10/ class 150	Socket	<b>727 700 817</b>	3.167
1	180	150	285	16	Metric	PN10	Butt	<b>724 700 318</b>	3.100
	180	150	285	16	Metric	PN10	Butt	<b>727 700 718</b>	3.108
1	200	200	344	16	Metric	PN16	Butt	<b>724 700 319</b>	3.549
	200	200	340	16	Metric/ASME	PN10/ class 150	Butt	<b>727 700 719</b>	5.600
	200	200	340	16	Metric/ASME	PN10/ class 150	Socket	<b>727 700 819</b>	6.143
1	225	200	344	16	Metric	PN16	Butt	<b>724 700 320</b>	3.380
	225	200	340	16	Metric/ASME	PN10/ class 150	Butt	<b>727 700 720</b>	5.533
	225	200	340	16	Metric/ASME	PN10/ class 150	Socket	<b>727 700 820</b>	4.448
1	250	250	410	16	Metric	PN16	Butt	<b>724 700 321</b>	6.390
	250	225	395	16	Metric	PN10	Socket	<b>727 700 031</b>	8.340
	250	250	395	16	Metric	PN10	Butt	<b>727 700 721</b>	6.632
	250	250	395	16	Metric	PN10	Socket	<b>727 700 821</b>	7.179
1	280	250	410	16	Metric	PN16	Butt	<b>724 700 322</b>	6.310

# Data sheet

valid from: 10/31/22

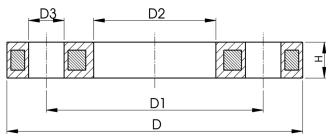


	d (mm)	DN (mm)	D (mm)	PN (bar)	Standard	Bolt / circle	Design	Code	Weight (kg)
	280	250	395	16	Metric	PN10	Butt	<b>727 700 722</b>	6.573
	280	250	395	16	Metric	PN10	Socket	<b>727 700 822</b>	5.547
1	315	300	455	16	Metric	PN16	Butt	<b>724 700 323</b>	9.740
	315	300	445	16	Metric	PN10	Butt	<b>727 700 723</b>	7.903
	315	300	445	16	Metric	PN10	Socket	<b>727 700 823</b>	6.980
	315	300	483	10	ASME	class 150	Butt	<b>727 701 322</b>	11.800
1	355	350	521	16	Metric	PN16	Butt	<b>724 700 324</b>	15.203
	355	350	515	16	Metric	PN10	Butt	<b>727 700 724</b>	14.587
	355	350	515	16	Metric	PN10	Socket	<b>727 700 824</b>	12.465
	355	350	540	10	ASME	class 150	Butt	<b>727 701 323</b>	17.900
1	400	400	582	16	Metric	PN16	Butt	<b>724 700 325</b>	20.600
	400	400	574	16	Metric	PN10	Butt	<b>727 700 725</b>	20.034
	400	400	574	16	Metric	PN10	Socket	<b>727 700 825</b>	17.607
	400	400	597	10	ASME	class 150	Butt	<b>727 701 324</b>	24.500
1	450	500	685	10	Metric	PN10	Butt	<b>724 700 426</b>	25.600
1	500	500	685	10	Metric	PN10	Butt	<b>724 700 427</b>	21.061
	560	600	796	10	Metric	PN10	Butt	<b>724 700 428</b>	35.000
	630	600	800	10	Metric	PN10	Butt	<b>724 700 429</b>	28.500
	710	700	912	6	Metric	PN10	Butt	<b>724 700 430</b>	25.500
	800	800	1026	6	Metric	PN10	Butt	<b>724 700 431</b>	39.300
	900	900	1129	6	Metric	PN10	Butt	<b>724 700 432</b>	48.500
	250	250	406	10	ASME	class 150	Butt	<b>727 701 321</b>	6.000
	450	500	712	10	ASME	class 150	Butt	<b>727 701 325</b>	33.600

	d (mm)	D1 (mm)	D2 (mm)	D3 (mm)	H max. (mm)	AL	SC
	20	65	28	14	12	4	M12
	20	60	28	16	12	4	M12
	25	75	34	14	12	4	M12
	25	70	34	16	12	4	M12
	32	85	42	14	16	4	M12
	32	79	42	16	16	4	M12
	40	100	51	18	16	4	M16
	40	89	51	16	16	4	M16
	50	110	62	18	20	4	M16
	50	98	62	16	18	4	M16
	63	125	78	18	20	4	M16
	63	121	78	19	18	4	M16
	75	145	92	18	20	4	M16
	75	140	92	19	18	4	M16
1	90	160	108	18	20	8	M16
	90	160	110	18	20	8	M16
	90	160	108	18	20	8	M16
	90	152	110	19	20	4	M16
	90	152	108	19	20	4	M16
1	110	180	128	18	20	8	M16
	110	180	133	18	20	8	M16
	110	180	128	18	20	8	M16
	110	190	133	19	20	8	M16
	110	190	128	19	20	8	M16
1	125	180	135	18	20	8	M16
	125	180	135	18	20	8	M16
	125	210	150	18	26	8	M16
1	140	210	158	18	24	8	M16
	140	210	158	18	24	8	M16
	140	210	167	18	26	8	M16
1	160	240	178	22	28	8	M20
	160	240	178	22	24	8	M20
	160	240	190	22	26	8	M20

# Data sheet

valid from: 10/31/22



	d	D1	D2	D3	H max.	AL	SC
	(mm)	(mm)	(mm)	(mm)	(mm)		
1	180	240	188	22	28	8	M20
	180	240	188	22	24	8	M20
1	200	295	235	22	31	12	M20
	200	295	235	22	27	8	M20
	200	295	226	22	29	8	M20
1	225	295	238	22	31	12	M20
	225	295	238	22	27	8	M20
	225	295	250	22	29	8	M20
1	250	355	288	26	35	12	M24
	250	325	277	22	32	8	M20
	250	350	288	22	30	12	M20
	250	350	277	22	32	12	M20
1	280	355	294	26	36	12	M24
	280	350	294	22	30	12	M20
	280	350	310	22	32	12	M20
1	315	410	338	26	43	12	M24
	315	400	338	22	34	12	M20
	315	400	348	22	36	12	M20
	315	432	338	25	34	12	M24
1	355	470	376	26	55	16	M24
	355	460	376	23	40	16	M20
	355	460	388	23	42	16	M20
	355	476	376	29	42	12	M27
1	400	525	430	30	56	28	M27
	400	515	430	26	40	16	M24
	400	515	442	26	42	16	M24
	400	539	429	29	44	16	M27
1	450	620	517	26	56	20	M24
1	500	620	533	26	56	20	M24
	560	725	618	30	68	20	M27
	630	725	645	30	68	20	M27
	710	840	740	30	49	24	M27
	800	950	843	33	58	24	M30
	900	1050	947	33	62	28	M30
	250	362	293	25	30	12	M24
	450	635	540	32	53	20	M30

The technical data are not binding. They neither constitute expressly warranted characteristics nor guaranteed properties nor a guaranteed durability. They are subject to modification. Our General Terms of Sale apply.

Georg Fischer Piping Systems Ltd, Postfach, CH-8201 Schaffhausen/Switzerland

Phone +41 -(0)52-631 1111

e-mail: [info.ps@georgfischer.com](mailto:info.ps@georgfischer.com)

Internet: <http://www.gfps.com>