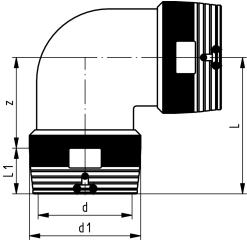




ELGEF Plus Elbow 90° PE100 d200-250mm / SDR11

- 10 bar Gas / 16 bar Water
- 4 mm pin connectors
- Limited path fusion indicators
- Two separate fusion zones



d	DN	PN	SDR	Code	Weight	d1	L	L1	z	SDR pipe
(mm)	(mm)	(bar)			(kg)	(mm)	(mm)	(mm)	(mm)	
200	200	16	11	753 101 819	9.320	250	298	104	194	11-26
225	200	16	11	753 101 820	13.220	280	318	112	206	11-26
250	250	16	11	753 101 821	16.600	310	347	123	224	11-26

The technical data are not binding. They neither constitute expressly warranted characteristics nor guaranteed properties nor a guaranteed durability. They are subject to modification. Our General Terms of Sale apply.

Georg Fischer Piping Systems Ltd, Postfach, CH-8201 Schaffhausen/Switzerland

Phone +41 -(0)52-631 1111

e-mail: info.ps@georgfischer.com

Internet: <http://www.gfps.com>