

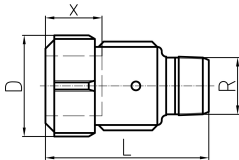


PRIMOFIT Male Adaptor galvanised for steel pipe

External thread R according to EN 10226-1
* Flange design



* Dim. 4



Dim. St (inch)	Dim. R (inch)	NBR Code	FKM Code	EPDM Code	SP	GP	Weight (kg)	GP
3/8	3/8	775 202 050		775 206 050	1	25	0.230	25
1/2	1/2	775 202 051	775 208 051	775 206 051	1	25	0.234	25
3/4	3/4	775 202 052	775 208 052	775 206 052	1	20	0.308	20
1	1	775 202 053	775 208 053	775 206 053	1	10	0.421	10
1 1/4	1 1/4	775 202 054	775 208 054	775 206 054	1	10	0.554	10
1 1/2	1 1/2	775 202 055	775 208 055	775 206 055	1	5	0.648	5
2	2	775 202 056	775 208 056	775 206 056	1	5	1.120	5
2 1/2	2 1/2	775 202 057	775 208 057	775 206 057	1	3	2.720	3
3	3	775 202 058	775 208 058	775 206 058	1	2	3.560	2
*	4	775 202 059		775 206 059		1	5.500	1

Dim. St (inch)	Dim. R (inch)	Weight (kg)	D (mm)	L (mm)	x (mm)
3/8	3/8	0.240	45	70	30 - 34
1/2	1/2	0.248	45	74	30 - 34
3/4	3/4	0.310	51	81	30 - 34
1	1	0.430	59	90	30 - 34
1 1/4	1 1/4	0.560	68	94	30 - 36
1 1/2	1 1/2	0.630	75	94	32 - 38
2	2	1.184	96	106	36 - 42
2 1/2	2 1/2	2.720	119	173	65 - 75
3	3	3.220	132	186	65 - 75
*	4	5.500	178	212	65 - 75

The technical data are not binding. They neither constitute expressly warranted characteristics nor guaranteed properties nor a guaranteed durability. They are subject to modification. Our General Terms of Sale apply.

Georg Fischer Piping Systems Ltd, Postfach, CH-8201 Schaffhausen/Switzerland

Phone +41 -(0)52-631 1111

e-mail: info.ps@georgfischer.com

Internet: <http://www.gfps.com>