

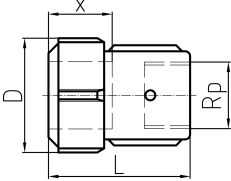


## PRIMOFIT Female Adaptor galvanised for steel pipe

Internal thread Rp according to EN 10226-1  
\* Flange design



\* Dim. 4



| Dim. St<br>(inch) | Dim. Rp<br>(inch) | NBR<br>Code | EPDM<br>Code | FKM<br>Code | SP | GP | Weight<br>(kg) | GP |
|-------------------|-------------------|-------------|--------------|-------------|----|----|----------------|----|
| 3/8               | 3/8               | 775 212 050 | 775 216 050  |             | 1  | 30 | 0.227          | 30 |
| 1/2               | 1/2               | 775 212 051 | 775 216 051  | 775 218 051 | 1  | 30 | 0.227          | 30 |
| 3/4               | 3/4               | 775 212 052 | 775 216 052  | 775 218 052 | 1  | 25 | 0.302          | 25 |
| 1                 | 1                 | 775 212 053 | 775 216 053  | 775 218 053 | 1  | 15 | 0.369          | 15 |
| 1 1/4             | 1 1/4             | 775 212 054 | 775 216 054  | 775 218 054 | 1  | 10 | 0.520          | 15 |
| 1 1/2             | 1 1/2             | 775 212 055 | 775 216 055  | 775 218 055 | 1  | 10 | 0.600          | 10 |
| 2                 | 2                 | 775 212 056 | 775 216 056  | 775 218 056 | 1  | 5  | 1.120          | 5  |
| 2 1/2             | 2 1/2             | 775 212 057 | 775 216 057  | 775 218 057 | 1  | 3  | 2.560          | 3  |
| 3                 | 3                 | 775 212 058 | 775 216 058  | 775 218 058 | 1  | 2  | 3.000          | 2  |
| *                 | 4                 | 775 212 059 | 775 216 059  |             |    | 1  | 5.300          | 1  |

| Dim. St<br>(inch) | Dim. Rp<br>(inch) | Weight<br>(kg) | D<br>(mm) | L<br>(mm) | x<br>(mm) |
|-------------------|-------------------|----------------|-----------|-----------|-----------|
| 3/8               | 3/8               | 0.247          | 45        | 56        | 30 - 34   |
| 1/2               | 1/2               | 0.219          | 45        | 60        | 30 - 34   |
| 3/4               | 3/4               | 0.289          | 51        | 63        | 30 - 34   |
| 1                 | 1                 | 0.309          | 59        | 68        | 30 - 34   |
| 1 1/4             | 1 1/4             | 0.486          | 68        | 72        | 30 - 36   |
| 1 1/2             | 1 1/2             | 0.550          | 75        | 74        | 32 - 38   |
| 2                 | 2                 | 1.150          | 96        | 83        | 36 - 42   |
| 2 1/2             | 2 1/2             | 2.660          | 119       | 138       | 65 - 75   |
| 3                 | 3                 | 3.074          | 132       | 148       | 65 - 75   |
| *                 | 4                 | 5.300          | 178       | 200       | 65 - 75   |

The technical data are not binding. They neither constitute expressly warranted characteristics nor guaranteed properties nor a guaranteed durability. They are subject to modification. Our General Terms of Sale apply.

Georg Fischer Piping Systems Ltd, Postfach, CH-8201 Schaffhausen/Switzerland

Phone +41 -(0)52-631 1111

e-mail: [info.ps@georgfischer.com](mailto:info.ps@georgfischer.com)

Internet: <http://www.gfps.com>