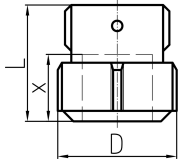


Data sheet

valid from: 10/11/21



PRIMOFIT Cap galvanised for steel pipe

Dim. (inch)	NBR Code	EPDM Code	FKM Code	SP	GP	Weight (kg)	GP	Weight (kg)
3/8	775 452 050	775 456 050		1	30	0.201	30	0.221
1/2	775 452 051	775 456 051	775 458 051	1	30	0.207	30	0.209
3/4	775 452 052	775 456 052	775 458 052	1	30	0.240	30	0.240
1	775 452 053	775 456 053	775 458 053	1	25	0.347	25	0.296
1 1/4	775 452 054	775 456 054	775 458 054	1	10	0.450	10	0.330
1 1/2	775 452 055	775 456 055	775 458 055	1	10	0.520	10	0.460
2	775 452 056	775 456 056	775 458 056	1	10	0.940	10	0.935

Dim. (inch)	D (mm)	L (mm)	x (mm)
3/8	45	48	30 - 34
1/2	45	48	30 - 34
3/4	51	50	30 - 34
1	59	53	30 - 34
1 1/4	68	54	30 - 36
1 1/2	75	55	32 - 38
2	96	60	36 - 42

The technical data are not binding. They neither constitute expressly warranted characteristics nor guaranteed properties nor a guaranteed durability. They are subject to modification. Our General Terms of Sale apply.

Georg Fischer Piping Systems Ltd, Postfach, CH-8201 Schaffhausen/Switzerland

Phone +41 -(0)52-631 1111

e-mail: info.ps@georgfischer.com

Internet: <http://www.gfps.com>