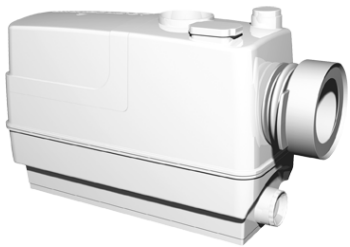
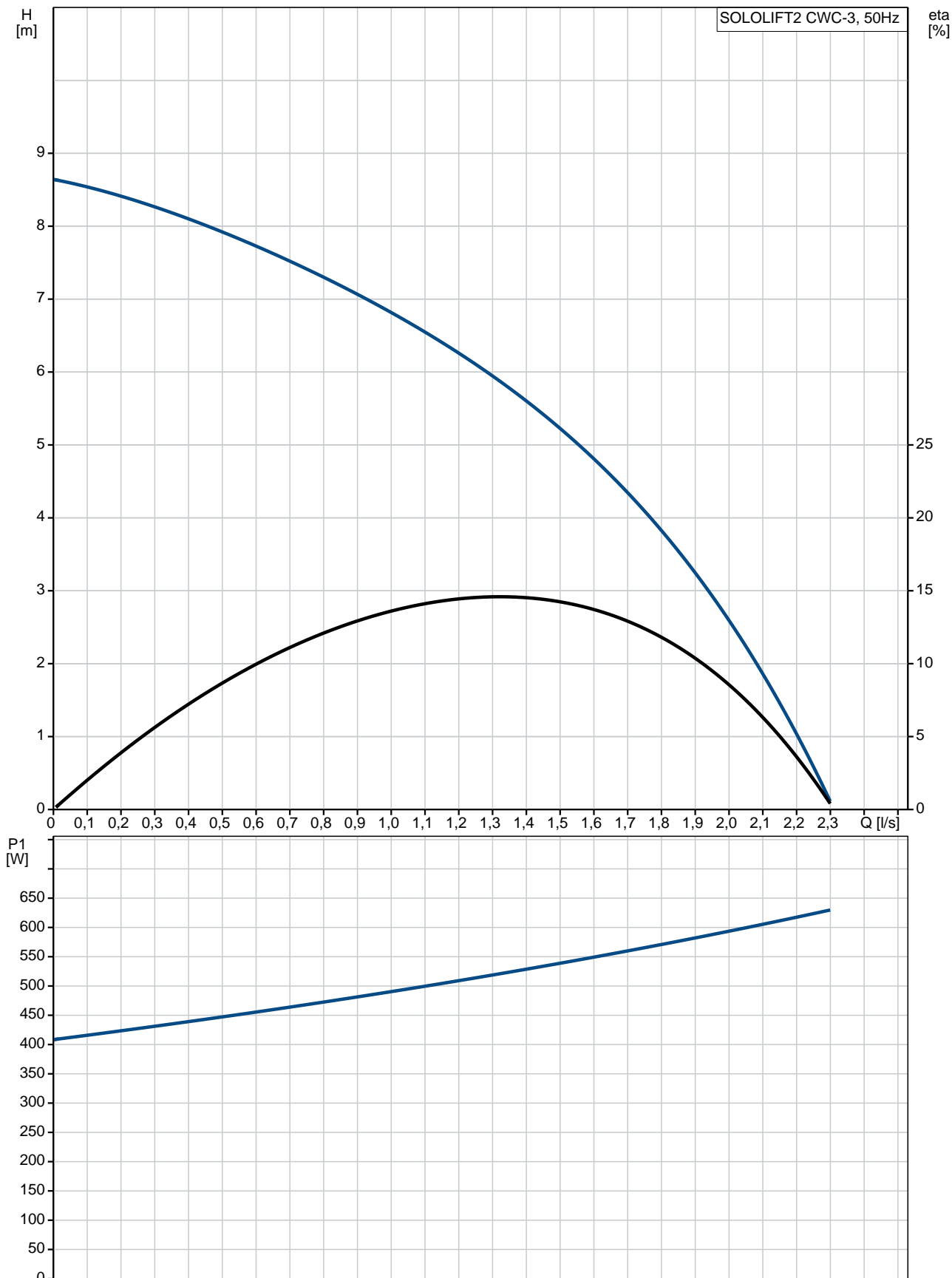


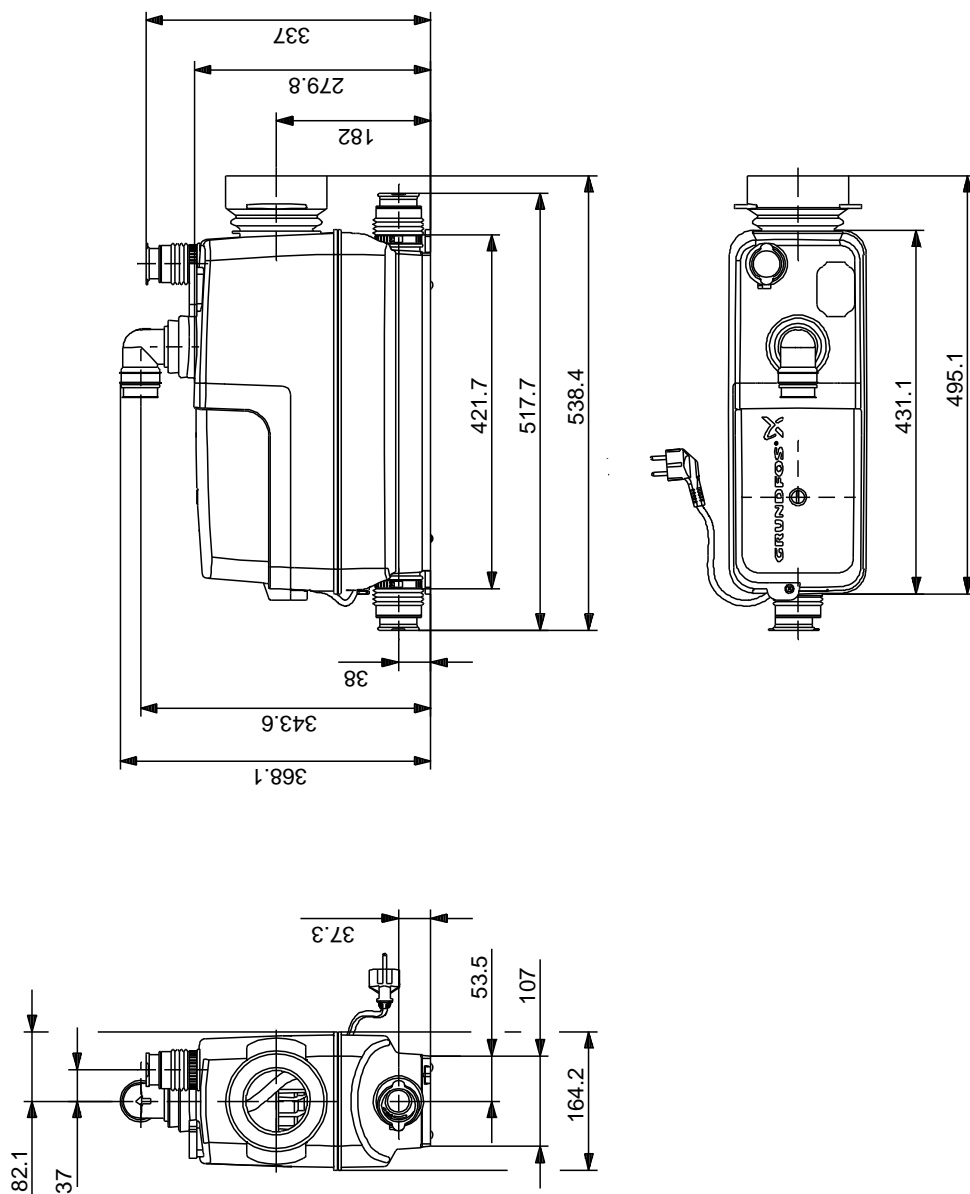
Kogus	Kirjeldus
1	<p>SOLOLIFT2 CWC-3</p>  <p>Märkus! Reaalse toote väljanägemine võib erineda pildil kujutatust.</p> <p>Toote kood:: Nõudmisel</p> <p>Sololift2 CWC-3 is a small, compact automatic lifting station suitable for pumping of wastewater off places in private dwellings where wastewater cannot be led directly to the sewer by means of a natural downward slope. Sololift2 CWC-3 is typically used for:</p> <ul style="list-style-type: none">• wall-hung toilets, cabinet showers and washbasins in basements below sewer level, in connection with the renovation or modernisation of existing buildings, where the location may be remote from the main soil pipe so that a natural slope cannot be established. <p>Extremely low switching levels for lowest construction heights, advantageously in case of connection of a shower receptor.</p> <p>Sololift2 CWC-3 is suitable for installation in a hollow space behind a wall-hung toilet.</p> <p>This lifting station is only suitable for pumping wastewater from a cabinet shower and a washbasin as well as sewage water from a toilet containing toilet paper and faeces.</p> <p>The pumping of liquids containing other material may cause faults and limit the scope of our guarantee.</p> <p>The compact lifting station is equipped with</p> <ul style="list-style-type: none">- Cable with or without plug (see technical data)- Horizontal or vertical fastening possibility of discharge hose connector with several adaptors for pipes with Ø22-40mm- integrated non return valve- Dry and high performance motor unit incl. thermal protection, pressure switch and controller- DN100 toilet connection hose- Flexible connectors for inlet (adjustable in height) of pipes Ø36 or 40- Slot for an alarm board with buzzer (accessory)- Manual anti clogging function and separate drain connection for service- Venting valve with overflow protection- Uplift fixation clips <p>Design according to EN12050-3 and production inspection by external institute with unique features focused on quick installation, long lasting operation and easy clean service.</p> <p>Vedelik:</p> <p>Pumbatav vedelik: Mistahes viskoosne vedelik Maks. vedeliku temperatuur: 50 °C Tihedus: 998.2 kg/m³</p> <p>Tehnilised:</p> <p>Tunnustused sildikul: CE,TR,VDEEMV,VDE,MORO Karak. tolerantsid: ISO9906:2012 3B</p> <p>Materjalid:</p> <p>Mahuti: Plastic</p> <p>Paigaldamine:</p> <p>Pumba imiava: 32/36/40, 36/40/50, DN 100</p>

Kogus	Kirjeldus
	Pumba surveava: 22/25/28/32/36/40 Juhtmete arv: 3X0,75MM2
	Elektriandmed:
	Tarbitav võimsus - P1: 620 W
	Vooluvõrgu sagedus: 50 Hz
	Nimipinge: 1 x 220-240 V
	Nimivool: 3 A
	Cos fii - võimsustegur: 0.92
	Nimikiirus: 2800 p/min
	Kaitseklass (IEC 34-5): IP44
	Isolatsiooniklass (IEC 85): F
	Kaabli pikkus: 1.2 m
	Kaabli tüüp: H05VV-F-3G
	Kaablipistiku tüüp: SCHUKO
	Muu:
	Nettokaal: 8.09 kg
	Bruttokaal: 9.69 kg
	Danish VVS No.: 614364632
	Finnish LVI No.: 4965314
	Norwegian NRF no.: 9045712
	Päritoluriik: RS
	Tollitariifi nr: 84137021

Nõudmisel SOLOLIFT2 CWC-3 50 Hz



Nõudmised SOLOLIFT2 CWC-3 50 Hz



Märkus! Kõik mõõdud on [mm] kui pole teisiti tähistatud.
Lahtiütlus: see lihtsustatud mõõtjoonis ei näita kõiki detaile.