

Ecostat

Bath thermostat Comfort for exposed installation

Finish: Polished Gold Optic Article Number: 13114990

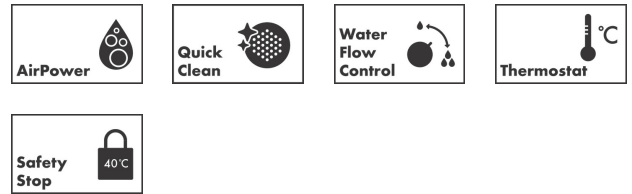


Description

product features

- projection 177 mm
- 2 functions
- thermostat cartridge, shut-off/ diverter valve
- spray type mixer: normal spray
- maximum flow rate at 3 bar: 20 l/min
- flow rate for bath spout at 3 bar: 20 l/min
- flow rate of hand shower at 3 bar: 16 l/min
- flow rate hand shower connection at 3 bar: 16 l/min
- min. operating pressure: 1 bar
- max. operating pressure: 10 bar
- Safety stop at 40 °C
- temperature limitation adjustable
- non-return valve
- with silencer
- material handles: metal
- connection dimension: DN15
- connection type: s-shaped connections, G ½
- centre distance: 150 ± 12 mm
- dirt filter included

Technology



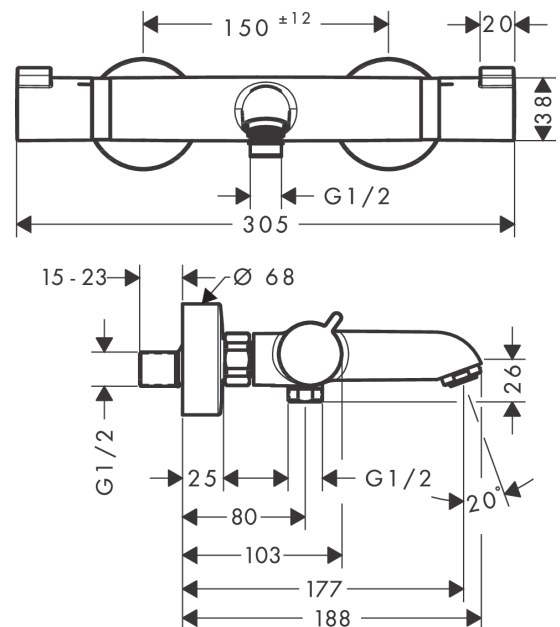
Design awards



Product image



Scale drawing



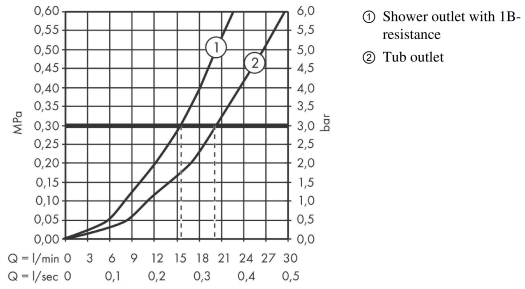
Ecostat

Bath thermostat Comfort for exposed installation

Finish: **Polished Gold Optic** Article Number: **13114990**



Flowchart



Ecostat

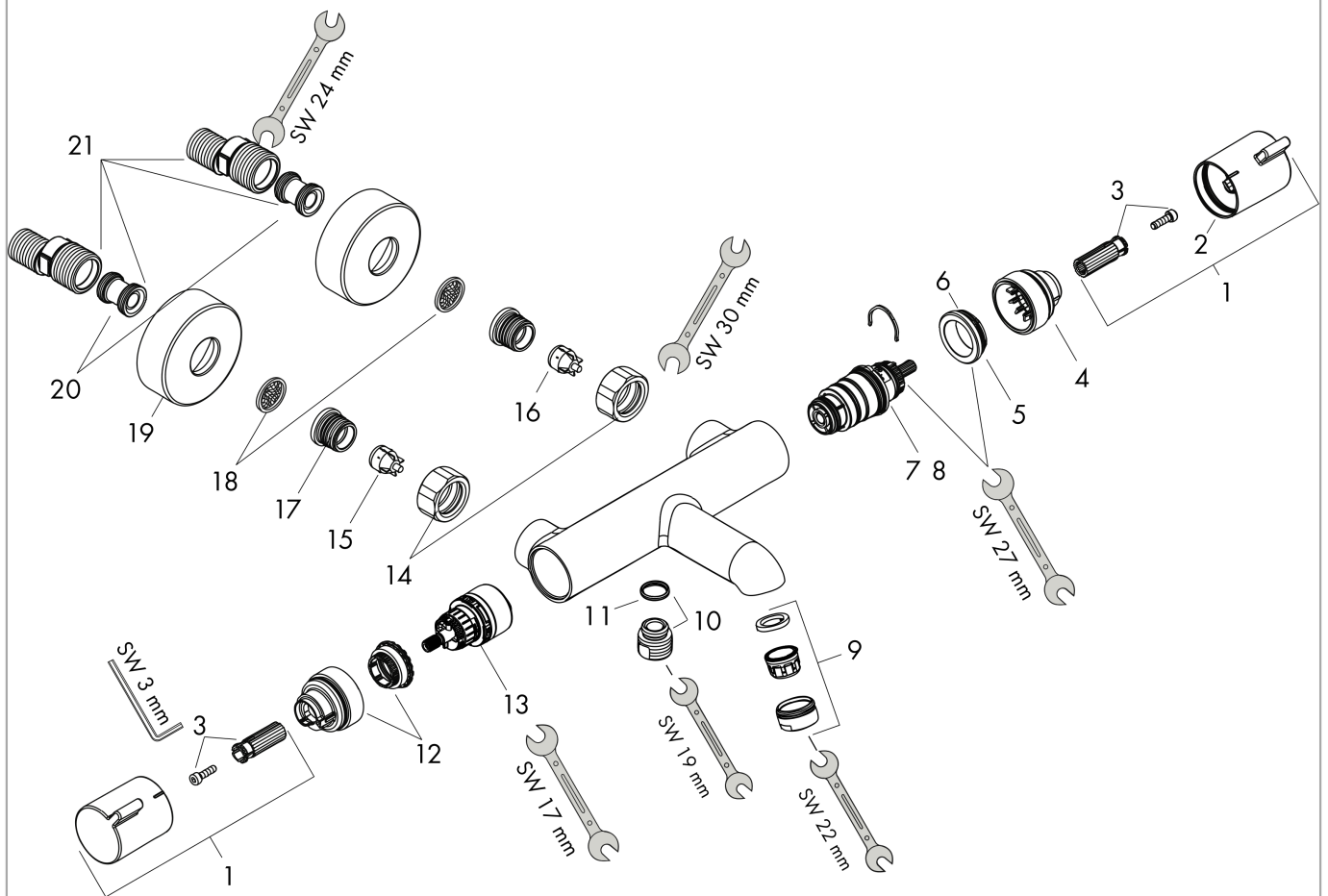
Bath thermostat Comfort for exposed installation

Finish: **Polished Gold Optic** Article Number: **13114990**



Exploded Drawing

Year of production: >07/19



Ecostat**Bath thermostat Comfort for exposed installation**Finish: **Polished Gold Optic** Article Number: **13114990****Spare part list**

Year of production: >07/19

Pos.	Description	Article Number	PC	PU
1	handle	95836990	58	1
2	pushbutton	92848990	52	1
3	handle fixing set	95843000	3	1
4	safety set	95839000	6	1
5	nut	98913000	6	1
6	O-ring 26x1,5	98390000	1	1
7	thermostat cartridge	98282000	14	1
8	cartridge for exchanged connections	92373000	18	1
9	aerator M24x1 (30 l/min)	96512990	7	1
10	connecting thread	95392000	6	1
11	O-ring 14x2	98129000	1	1
12	safety set	95840000	6	1
13	shut off unit with selector	98283000	12	1
14	set of nuts	96157990	58	1
15	non return valve (pressure-resistant up to 2 MPa)	93136000	8	1
16	non return valve	96737000	8	1
17	O-ring 17x1,5	98137000	1	1
18	filter packing	96922000	3	1
19	escutcheon Ø 68 mm	96467990	56	1
20	set of S-unions (±12 mm)	94140000	10	1
21	noise reduction	96429000	2	1