

**Talis E**  
**Single lever bath mixer for exposed installation**  
 Surfaces: **Chrome** Article Number: **71740000**



### Description

#### product features

- projection 194 mm
- connection type: s-shaped connections
- centre distance: 150 ± 12 mm
- spray type mixer: normal spray
- flow rate for bath spout at 3 bar: 19 l/min
- flow rate of hand shower at 3 bar: 17 l/min
- ceramic cartridge
- temperature limitation adjustable
- diverter with automatic resetting
- with silencer
- suitable for continous flow water heaters
- connection dimension: DN15

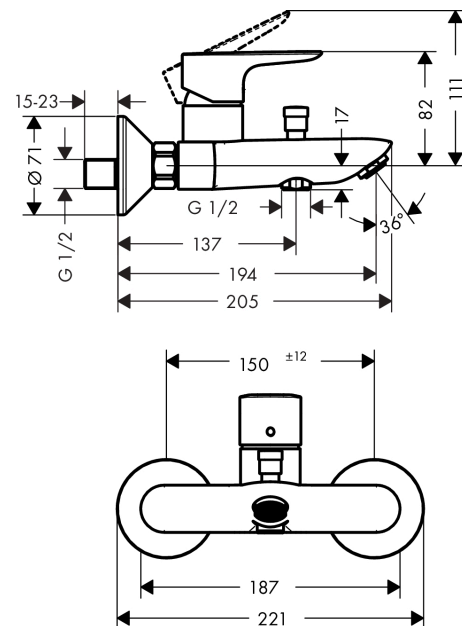
### Technology



### Product image



### Scale drawing



### Flowchart

