

# HL340N

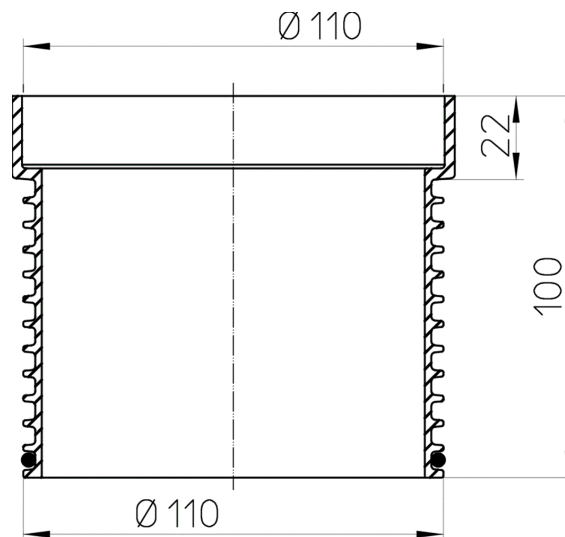
extension 80mm/d 110mm incl. O-ring



extension 80 mm / d 110 mm incl. O-ring



## Techn. drawing



## TECHNICAL DATA

|                  |          |                            |       |
|------------------|----------|----------------------------|-------|
| <b>material</b>  | PP       | <b>installation height</b> | 80 mm |
| <b>dimension</b> | d 110 mm | <b>grate frame</b>         |       |
| <b>capacity</b>  |          | <b>grate</b>               |       |
| <b>weight</b>    | 0,075    | <b>load class</b>          |       |

EAN

9003076003402

inlet

standards

## MAIN DATA

### spare parts



**HL01067D**

O-ring 92x4mm

### attachment



**HL619**

fixing brackets

### extensions



**HL340N**

extension 80mm/d 110mm incl. O-ring



**HL85N**

extension with flange incl. O-ring



**HL85NC**

extension d 110mm CeraDrain with polymer concrete collar incl. O-ring



**HL85NH**

extension incl. O-ring with bitumen membrane

### used with



**HL37NP**

grating d 110mm/PVC-collar 185x185mm/115x115mm



**HL37NP.1**

grating d 110mm/PVC-collar 185x185mm/115x115mm with trap seal



**HL37NPPr**

grating d 110mm/PVC-collar 185x185mm/115x115mm and trap seal Primus

## DOWNLOADS

|                        |                       |                |
|------------------------|-----------------------|----------------|
| <b>Foto Print</b>      | <b>HL340N_pr.tif</b>  | max.           |
| <b>Foto Web</b>        | <b>HL340N_B.jpg</b>   | 640x480/300dpi |
| <b>Foto Parts List</b> | <b>HL340N_gr.jpg</b>  | 150x150/72dpi  |
| <b>Techn. drawing</b>  | <b>HL340N_a.pdf</b>   | pdf            |
| <b>CAD</b>             | <b>HL340N_2_a.dxf</b> | dxf            |