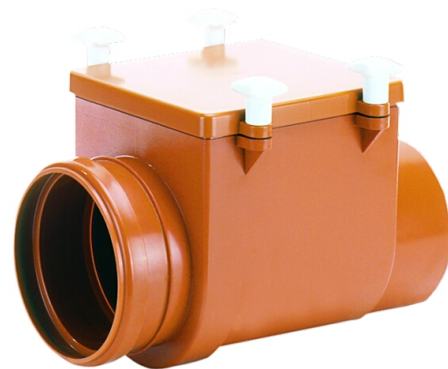


# HL710

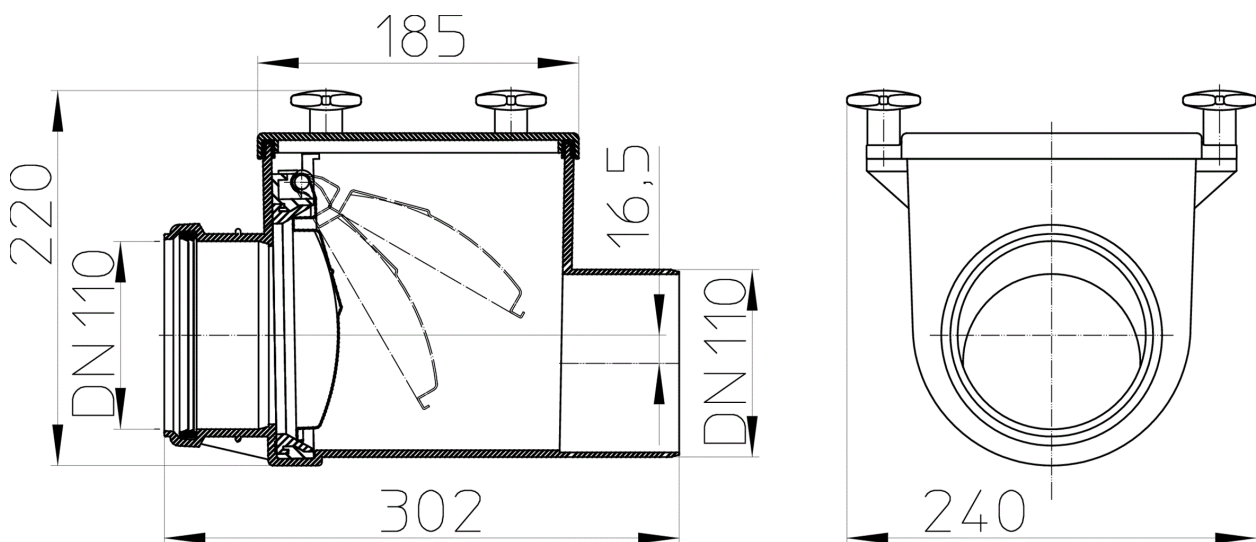
anti-flood valve DN110 with stainless steel flap



anti-flood valve DN110 with automatic stainless steel flap and cleaning eye.  
ATTENTION! New model - identifiable by sockets molded to the body. Models with screwed sockets have other spare parts - please contact HL!



## Techn. drawing



## TECHNICAL DATA

material	ABS	installation height	220 mm
dimension	DN110	grate frame	
capacity		grate	
weight	1,556	load class	

EAN

9003076907106

inlet

standards

## MAIN DATA

### spare parts



**HL01064D**

lip seal DN110



**HL01078D**

casing gasket NEW



**HL0710.30E**

casing cover NEW



**HL0710.32E**

flap cartridge NEW



**HL01077D**

flap seal NEW



**HL0710.8E**

butterfly nuts (4 Stk.)

### attachment



**HL0710.31E**

casing cover with lock

### Alternatives



**HL710.1**

anti-flood valve DN110 with stainless steel flap and manual blocking



**HL710.2**

anti-flood valve DN110 with 2 stainless steel flaps and manual blocking



**HL710.2EPC**

Mechanical main sewer closure DN110 with motorized flap, with additional stainless steel flap and manual locking

## DOWNLOADS

<b>Foto Print</b>	<b>HL710_pr.tif</b>	max.
<b>Foto Web</b>	<b>HL710_B.jpg</b>	640x480/300dpi
<b>Foto Parts List</b>	<b>HL710_gr.jpg</b>	150x150/72dpi
<b>Techn. drawing</b>	<b>HL710_c.pdf</b>	pdf
<b>CAD</b>	<b>HL710_2_c.dxf</b>	dxf