

TAP FITTING FINERA

PRODUCT INFORMATION

1 . POSITION



Article number	927000LC
Article title	Villeroy & Boch Finera Kitchen tap, of Stainless steel, Solid stainless steel
Product designation	Kitchen tap
Collection	Finera
Assembly / Assembly type	Pillar tap
Assembly instructions	Please note: tap must not be installed directly in front of a wall as the water temperature is regulated 45° to the rear and 45° towards the front of the sink
Scope of delivery	1 x tap fitting , 1 x set of connecting hoses 1 x fastening set 1 x installation instructions 1 x care tips
Ordering information	Outlet fitting and pop-up waste button available separately
Length in mm	411
Width in mm	251
Height in mm	55
Weight in kg	1,72
Material	Stainless steel
Surface	matt
Colour name	Solid stainless steel
EAN number	4051202570743
Technical information	Material: solid stainless steel, Cartridge material: plastic, ceramic gaskets Swivel range: 360° Opening angle of lever: 25° Please note: tap must not be installed directly in front of a wall as the water temperature is regulated 45° to the rear and 45° towards the front of the sink Flow volume: 10.5 l/min Flexible connection hoses, length 600 mm Adjustable aerator
Low pressure	No
Length of spout in mm	216

COLOUR

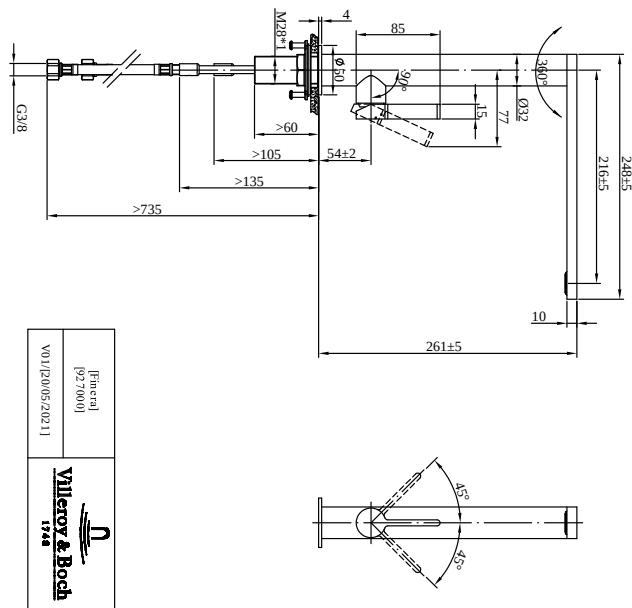
COLOUR DESIGNATION



Solid stainless steel

TECHNICAL DRAWINGS

927000LC



CHARACTERISTICS



Practical tap fitting height, ideal for combination with surface-mounted washbasins