

ADORA®

A01.00 UK
User manual

Kitchen faucet
Wash basin faucet



Intended use

- ADORA® faucets are manufactured to provide a kitchen sink or a wash basin with cold drinking water, hot water and mixed water for household purposes
 - ADORA® faucets are manufactured for use in; bathrooms, kitchens and utility rooms in private homes, offices, institutions a.o.
-

Guaranty

- A 10-year guaranty is granted against drip and manufacturing defects. The guaranty covers spare parts.
 - The purchase receipt is the product guaranty certificate. Keep the receipt together with the manual.
 - It is recommended to scan or copy the receipt, as printing ink may fade over time
-

Maintenance

- Faucets with chromed or colored surfaces and faucets in stainless steel must be wiped immediately after use
 - Clean the aerator frequently or replace it when needed
 - Stainless steel faucets must be treated frequently with care products made especially for stainless steel.
 - Stainless steel, which is not properly maintained, is likely to grow rust.
 - Especially stainless steel aerators may grow rust if they are not frequently maintained
-

Cleaning

- Use only neutral detergents that are not abrasive or lime-soluble and do not contain acid, chlorine, or phosphorus
 - When using sprayable detergents; always spray the detergent on a cloth first and then apply the cloth to the faucet. Direct spray on the faucet, gives a risk of damaging the rubber rings and other vital parts
 - Never use abrasive vapors or scouring sponges on faucets
 - Stainless steel faucets must be cleaned frequently with detergents made especially for stainless steel
-

Installation

ADORA® faucets shall be mounted in a legal installation and in accordance with applicable laws of the country in which the faucet is mounted. If there is any doubt about the correct installation, contact an authorized plumbing installer.

The operating pressure of the installation must be between 1 and 6 bar. At higher operating pressures, pressure reduction valves must be installed on both cold and hot water connections.

If the faucet drips or does not work immediately after installation:

1. Leave the faucet installed and shut off the water supply
2. See the 'Questions & Answers' section in this manual
3. For more information go to www.adora-design.com or write to: info@adora-design.com

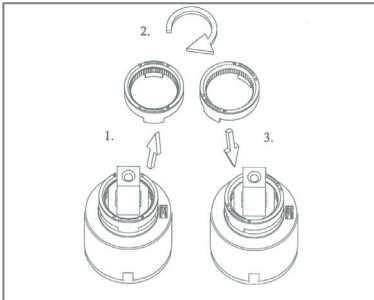
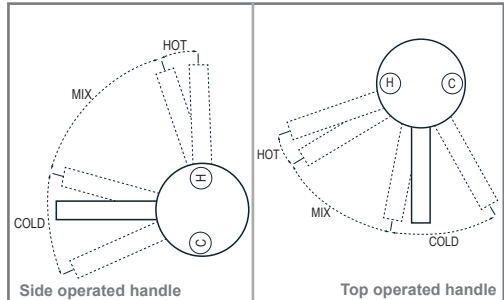
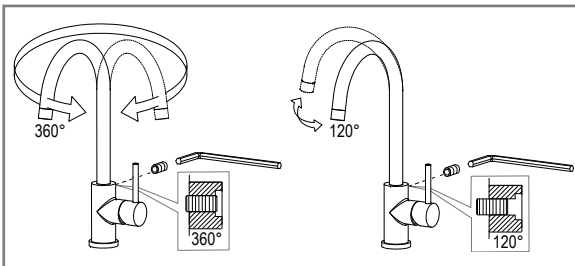
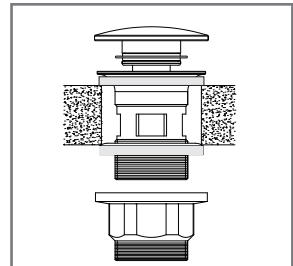
Remember to attach some photos of the installed product. Furthermore, a copy of the purchase receipt and if possible, the installation receipt.

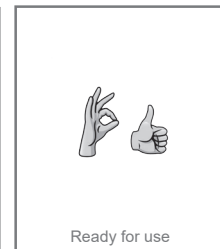
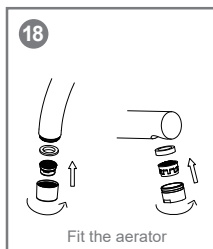
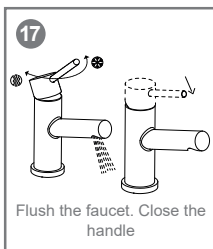
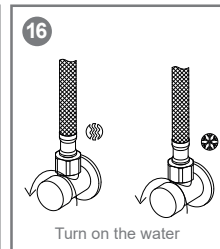
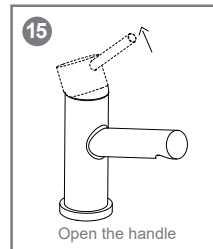
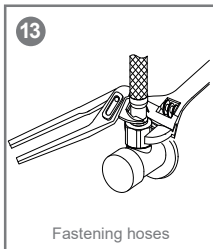
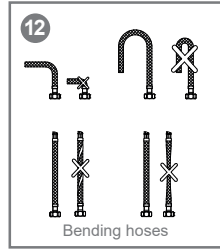
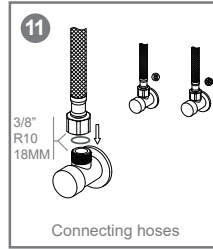
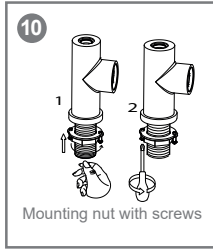
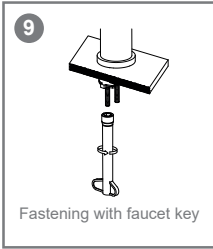
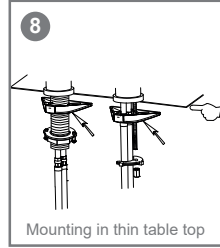
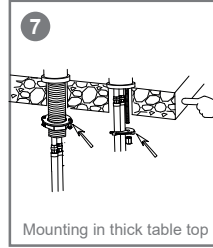
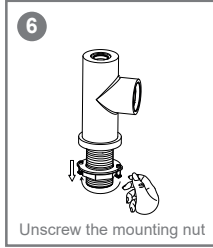
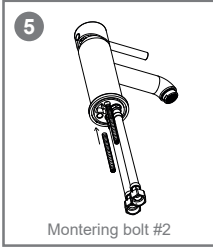
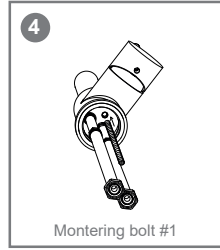
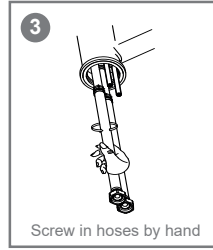
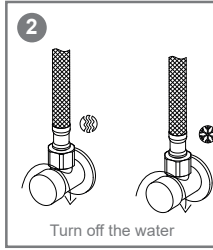
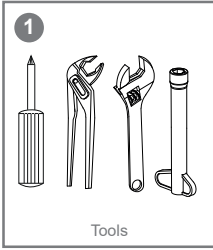
Before installation:

- Unpack the new faucet
- Make yourself an overview of the content
- Make sure that the installation is compatible with the supplied mounting parts
- If the installation does not fit together with the supplied mounting parts, obtain additional mounting parts at the dealer
- Check that fixing bolts can reach through the wash basin / tabletop
- Prepare the necessary tools
- Shut off the water supply
- Remove the old faucet
- Cover pipes and valves for protection against dirt during installation

After installation

- Remove the aerator
- Open the handle
- Slowly open the water supply
- Activate the handle; to make sure water is coming out of the spout, first cold and then hot
- Mount the aerator again
- Adjust, if necessary, water flow on the valves, or replace the aerator with a water saving aerator
- Check that all connections are tight, and not leaking
- Repeat the check again after a few hours to ensure successful assembly

Temperature limiter****Selected faucets****Cold start function******Selected faucets****Setting of turn limiter on swivel spout****** Selected kitchen faucets****Mounting of waste valve******Wash basin faucets only**



Questions & Answers

There is too little water:

- Check for dirt in the aerator
- Check for dirt in the connection hoses
- Increase the water supply on the valve
- Replace the aerator into one with higher flow rate

There is too much water:

- Reduce water supply on the valve
- Replace the aerator into one with less flow rate

Water runs constantly:

- Turn off the water supply
- Remove the handle
- Replace the cartridge

Water drips continuously from the spout:

- Turn off the water supply
- Remove the handle
- Replace the cartridge

The faucet drips for a while after closing the handle:

- The aerator is stopped with dirt or lime
- Clean, descale or replace the aerator

Water drips from the handle:

- Turn off the water supply
- Remove the handle
- Replace the cartridge

The handle moves tight:

- Turn off the water supply
- Remove the handle
- Replace the cartridge

Leakings from the swivel spout

- Replace the rubber rings at the swivel.
- Lubricate the new rubber rings with silicone grease

Water flows down the hoses:

- The hose fittings are screwed in too little. Screw the hoses fully into the faucet, by hand only.
- O-rings may be damaged, replace O-rings

The swivel spout turns tight:

- Remove the spout and lubricate the rubber rings with silicone grease.
- Silicone grease itself cannot repair a leak. In case of leaks, replace the rubber rings. lubricated with silicone grease before remounting the swivel spout
- Rubber rings at the swivel spout are wearing parts and those are not covered by the drip guaranty

Spare parts

Spare parts drawings are available at www.adora-design.com

Technical data

- Test pressure: 25 bar
 - Operating pressure: 1-6 bar
 - Max. inlet water temperature: 80 °C
 - Test norm: 1-handle faucets EN817. 2-handle faucets EN 200
-

Disposal

Local national regulations on disposal and recycling must be observed.

Disclaimer

Nor the dealer, distributor or manufacturer can be liable for:

- Faults, defects, damage and consequential damage caused by incorrect installation
 - Faults, defects, damage and consequential damage caused by incorrect use
 - Damage caused by limestone and frost damage
 - Damage due to dirt from the water supply
 - Lack of maintenance
 - Faucets installed and used without following the user manual
 - Unnecessary violent behavior that causes damage to the product
-

Contact

www.adora-design.com - info@adora-design.com
